



BRIEF INFORMATION

DuraLED surface mount courtesy lamp

- High impact resistant lens made from Grilamid®
- Ultra long service life
- Slim design – thickness of 9 mm

PRODUCT FEATURES

HELLA, the world's premier automotive lighting specialist, has launched a new range of easy-mount DuraLED courtesy lamps, featuring a lens made from a revolutionary, highly UV stable, ultra-durable Grilamid® optical nylon. This lamp series includes a robust Multivolt circuit with very low power consumption.

The use of the "Swiss Made" high tech material Grilamid® for courtesy lamp is an industry first. Pioneered by HELLA 5 years ago, the material properties of Grilamid® remain unmatched to this day.

Grilamid® has become the material of choice for operators of equipment regularly exposed to high vibration and impact conditions, as well as the myriad of common industry and agricultural chemicals.

Lightweight and easy to install, DuraLED surface mount courtesy lamps are UV, chemical, stress and impact resistant. Optional accessories include a marine grade – 316 stainless steel rim and coloured screw caps for a complete customized finish.

FURTHER PRODUCT FEATURES

Reverse polarity protection

If the polarity is accidentally reversed, the light does not suffer any damage.

Sealed to withstand high-pressure cleaning

Tested to IP 6K7 and IP 6K9K, this light is protected from dust and water ingress under constant immersion.

High vibration resistance

The lights have been tested to HELLA Norm 67101 and meet the requirements for OEM production buses, commercial vehicles and tractors over 6.5 t.

Designed for a Fit and Forget service life

The latest LED technology provides an optimum signal pattern with low power consumption.

LED LIGHTING TECHNOLOGY

As a leading innovator in the field of automotive original equipment, HELLA is setting benchmarks:

Extremely low energy consumption

With the combination of efficient light-emitting diodes (LEDs) and precision optics, HELLA lights achieve the statutory light distribution with over 90 % less power consumption compared to bulb lamps! No change of light source, no maintenance and an extremely long operating life due to optimal thermal management. To extend the design life of the light, the components are arranged in a way that optimises the

temperature conditions, preventing overheating of the LEDs at high ambient temperatures. Competent thermal management maximises design life. The design life of these LED lamps corresponds to that of the vehicle.



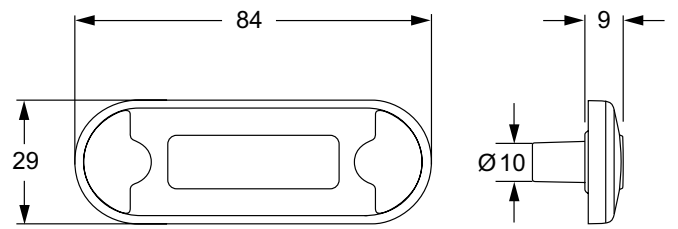
TECHNICAL DETAILS

Technical Data

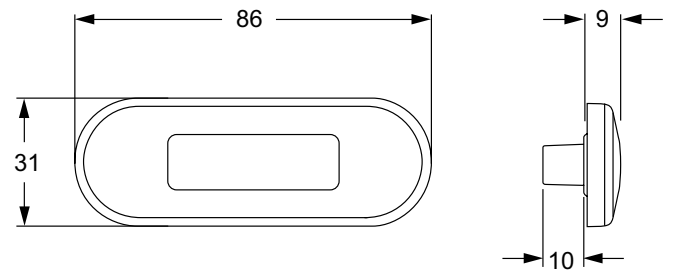
Operating voltage	Multivolt
Mounting	horizontal or vertical
Number of LEDs	2
Power consumption	0.5 W
Operating temperature	-40°C to +60°C
Protection class	IP 6K7, IP 6K9K
Contacts	0.5 m cable
Installation	Screw connection with 2 screws Ø 5 mm
Specification	Norm 67101, class 1.3, 2.3, 3.3, 4.2, 5.2, 6.2, 7.3, 10.3, 11.3
Design life	Design life of the vehicle*

*Dependent upon the operating temperature

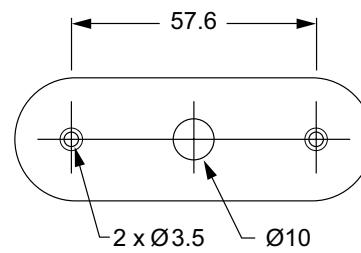
Technical drawing



With optional stainless steel rim

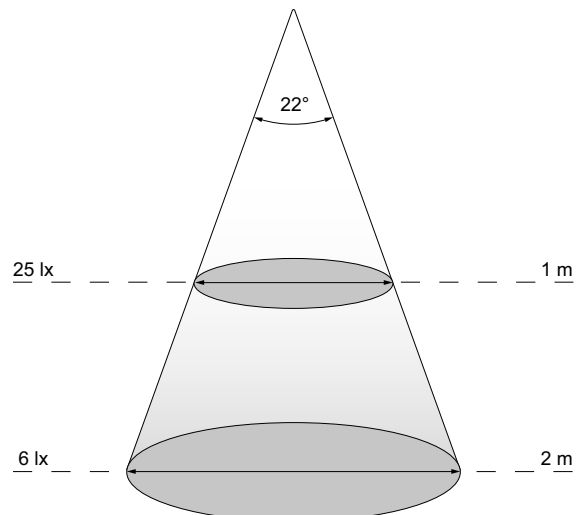
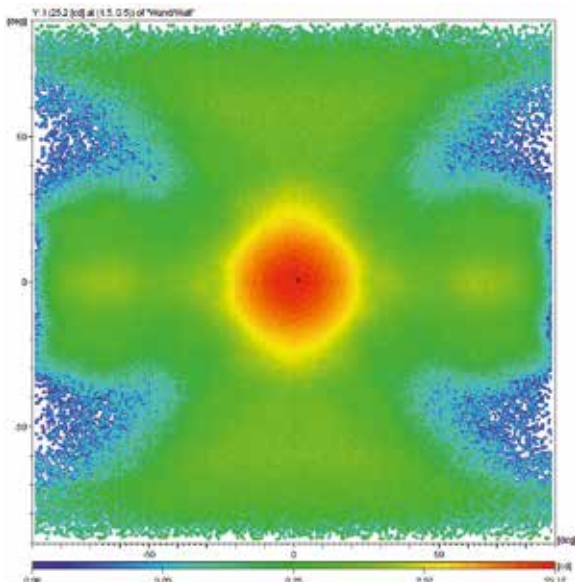


Hole pattern



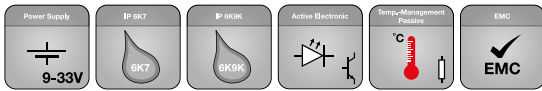
All dimensions in mm

LIGHT DISTRIBUTION



Courtesy lamp, white
2XT 980 855-117

RANGE OVERVIEW



Product Image	Part Number	Function	Connection	Packaging Unit
	2XT 980 855-117	Courtesy lamp, white	0.5 m cable	16
	2XT 980 855-167*	Courtesy lamp, warm white	0.5 m cable	16
	2XT 980 855-267*	Courtesy lamp, amber	0.5 m cable	16
	2XT 980 855-347*	Courtesy lamp, red	0.5 m cable	16
	2XT 980 855-417	Courtesy lamp, blue	0.5 m cable	16
	2XT 980 855-517*	Courtesy lamp, green	0.5 m cable	16

* Available on request

SPARE PARTS / ACCESSORIES

Product Image	Part Number	Function	Packaging Unit
	9AB 959 685-001*	Polished stainless steel rim	1
	9AB 959 685-021*	Gold plated stainless steel rim	1
	9AB 959 685-061*	Satin chrome plated stainless steel rim	1
	9HD 980 858-008*	Screw caps, black	4
	9HD 980 858-028*	Screw caps, grey	4
	9HD 980 858-038*	Screw caps, red	4
	9HD 980 858-048*	Screw caps, yellow	4
	9HD 980 858-058*	Screw caps, green	4
	9HD 980 858-068*	Screw caps, blue	4
	9HD 980 858-078*	Screw caps, amber	4

* Available on request