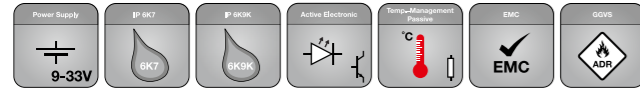


RANGE OVERVIEW



| Product Image | Part Number | Function | Connection | Packaging Unit |
|---------------|-----------------|-----------------------------------|-------------|----------------|
| | 2PF 959 855-201 | Front Position / End Outline Lamp | 0.5 m cable | 1 |
| | 2PF 959 855-207 | Front Position / End Outline Lamp | 0.5 m cable | 24 |
| | 2PF 959 855-241 | Front Position / End Outline Lamp | 2.5 m cable | 1 |
| | 2PF 959 855-247 | Front Position / End Outline Lamp | 2.5 m cable | 16 |
| | 2PF 959 855-251 | Front Position / End Outline Lamp | 0.5 m cable | 1 |
| | 2PF 959 855-257 | Front Position / End Outline Lamp | 0.5 m cable | 24 |
| | 2XS 959 855-401 | Rear Position / End Outline Lamp | 0.5 m cable | 1 |
| | 2XS 959 855-407 | Rear Position / End Outline Lamp | 0.5 m cable | 24 |
| | 2XS 959 855-441 | Rear Position / End Outline Lamp | 2.5 m cable | 1 |
| | 2XS 959 855-447 | Rear Position / End Outline Lamp | 2.5 m cable | 16 |
| | 2XS 959 855-451 | Rear Position / End Outline Lamp | 0.5 m cable | 1 |
| | 2XS 959 855-457 | Rear Position / End Outline Lamp | 0.5 m cable | 24 |

SPARE PARTS / ACCESSORIES

| Product Image | Part Number | Function | Packaging Unit |
|---------------|-----------------|---|----------------|
| | 9AB 959 655-201 | Polished Stainless Steel Rim – ECE Engraved | 1 |
| | 9HD 980 858-018 | White Screw Cap | 4 |



BRIEF INFORMATION

DuraLED Flush Mount Marker Lamps

- High impact resistant lens made from Grilamid®
- Ultra long service life
- Slim design – thickness of 9 mm

PRODUCT FEATURES

HELLA, the world's premier automotive lighting specialist, has launched a new range of easy-mount DuraLED Marker and Position Lamps, featuring a lens made from a revolutionary, highly UV stable, ultra-durable Grilamid® optical nylon. This lamp series includes a robust Multivolt circuit with very low power consumption.

The use of the Swiss Made high tech material Grilamid® for Marker and Position lamps is an industry first. Pioneered by HELLA some 5 years ago, the material properties of Grilamid® remain unmatched to this day.

Grilamid® has become the material of choice for operators of equipment regularly exposed to high vibration and impact conditions, as well as the myriad of common industry and agricultural chemicals.

Lightweight and easy to install, DuraLED Flush Mount Marker Lamps are UV, chemical, stress and impact resistant. Optional accessories include a marine grade – 316 stainless steel rim and coloured screw caps for a complete customized finish.

FURTHER PRODUCT FEATURES

Reverse polarity protection

If the polarity is accidentally reversed, the light does not suffer any damage.

Contacts

0.5 m or 2.5 m sealed cable may be selected.

Sealed to withstand high-pressure cleaning

Tested to IP 6K7 and IP 6K9K, this light is protected from dust and water ingress under constant immersion.

High vibration resistance

The lights have been tested to HELLA Norm 67101 and meet the requirements for OEM production buses, commercial vehicles and tractors over 6.5 t.

Designed for a Fit and Forget service life

The latest LED technology provides an optimum signal pattern with low power consumption.



New slim design
Featuring a thickness of just 9 mm

LED LIGHTING TECHNOLOGY

As a leading innovator in the field of automotive original equipment, HELLA is setting benchmarks:

Extremely low energy consumption

With the combination of efficient light-emitting diodes (LEDs) and precision optics, HELLA lights achieve the statutory light distribution with over 90 % less power consumption compared to bulb lamps! No change of light source, no maintenance and an extremely long operating life due to optimal thermal management. To extend the design life of the light, the components are arranged in a way that optimises the temperature conditions, preventing overheating of the LEDs at high ambient temperatures. Competent thermal management maximises design life. The design life of these LED lamps corresponds to that of the vehicle.

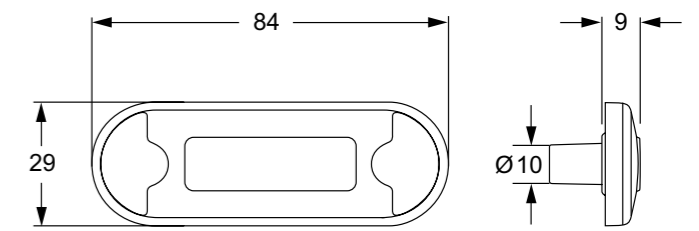
TECHNICAL DETAILS

Technical Data

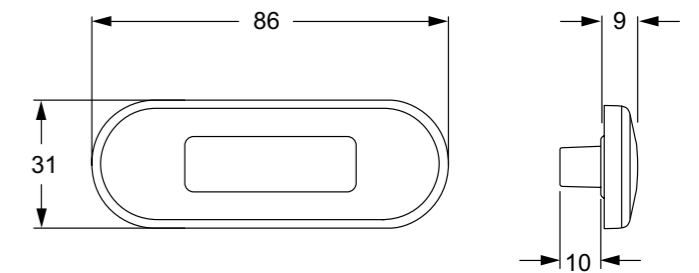
| | |
|-----------------------|---|
| Type approval* | ECE ☉ 5878 |
| Operating voltage | 12 V and 24 V |
| EMC approval | ☉ 10R-042899 |
| Functions | Position lamp End-outline marker lamp |
| Mounting | horizontal or vertical |
| Number of LEDs | 2 |
| Power consumption | 0.5 W |
| Operating temperature | -40°C to +60°C |
| Protection class | IP 6K7, IP 6K9K |
| Contacts | 0.5 m or 2.5 m cable |
| Installation | Screw connection with 2 screws Ø 5 mm |
| Specification | Norm 67101, class 1.2, 2.2, 3.2, 4.1, 5.1, 6.1, 7.2, 10.2, 11.2 |
| Design life | Design life of the vehicle* |

* Dependent upon the operating temperature

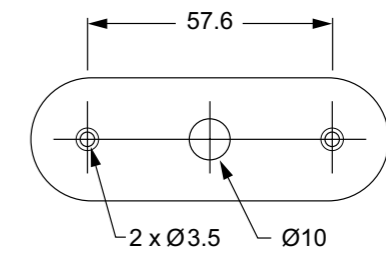
Technical drawing



With optional Stainless Steel rim



Hole Pattern



All dimensions in mm

INSTALLATION



APPLICATION EXAMPLES

