



To the product video

BRIEF INFORMATION

Bi-LED low beam and high beam headlamp L 4565 – Performance

- Excellent light performance of low beam and high beam from a single headlamp module
- “Zero Tolerance Integration” creates new design freedom
- For challenging applications

PRODUCT FEATURES

The Bi-LED low beam and high beam headlamp L 4565 Performance has been designed to provide excellent light output even under the most difficult conditions. The module is just as robust as the L 4565 Essential version, but has four additional LEDs.

The L 4565 Performance modules are also part of the HELLA 90 mm module series and combine low and high beam in one module. With their superior performance, they replace the 1st and 2nd generation of Bi-LED modules (L 70 and L 5570). The headlamps' die-cast aluminium housing is designed for use on construction machinery. It is characterised by high vibration resistance and, in accordance with protection class IP 67, is also dustproof and can withstand temporary immersion in water.

The highlight of the Bi-LED low beam and high beam headlamp L 4565 Performance is its “Zero Tolerance Integration”, making the lamp particularly easy to install. The front part of the module is firmly embedded into the front skirt of the vehicle and is not moved afterwards. Instead, both the initial adjustment and the headlamp levelling are adjusted via the rear part of the module, which is not visible from the outside. The flat cover lens ends flush with the front of the vehicle, meaning that it is a design element.

The lamp is equipped with a 4-pin DEUTSCH connector. Polarity reversal protection and thermal management ensure maximum service life.

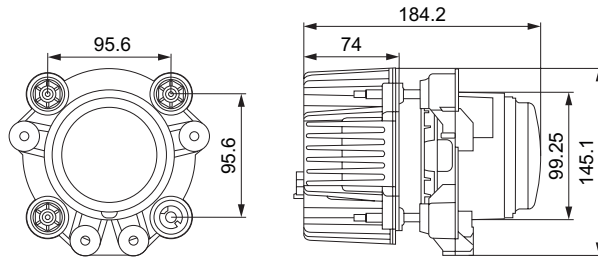
TECHNICAL DETAILS



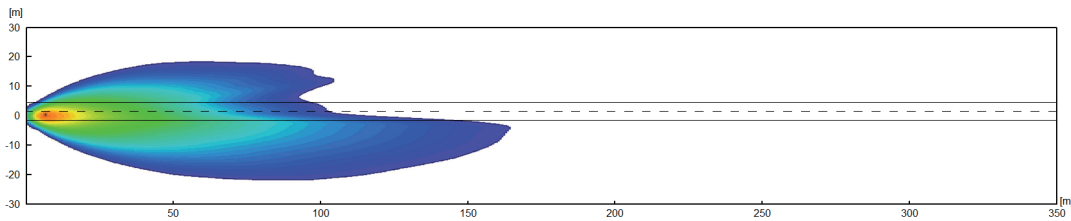
Technical data

Operating voltage	Multi-voltage (9 – 32 V)
Rated voltage	12 V / 24 V
Light function	Low beam High beam
Light source	LED
Colour temperature	5,500 Kelvin
Temperature range	-40 °C to +60 °C
Protection class	IP 67
Type approval	ECE R149.00 Table 8, Class B, FMVSS 108, CCC
EMC protection	According to ECE R10: CISPR 25 Class 4 and 5 (radio interference suppression conducted and radiated)
Connection	4-pin DEUTSCH connector

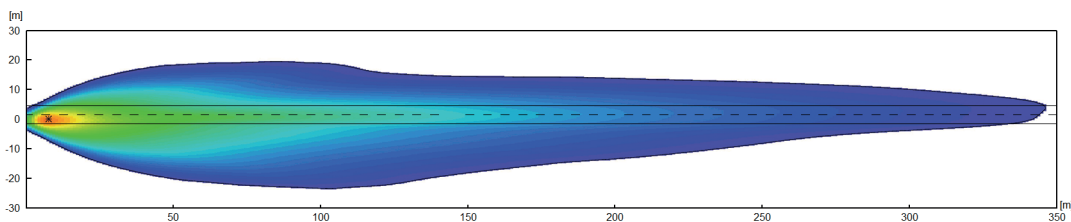
Dimensional sketch



LIGHT DISTRIBUTION



Low beam



High beam (including low beam)



PROGRAM OVERVIEW

Approval	Version	Part number
ECE	Right-hand traffic	1AL 015 318-031
	Left-hand traffic	1LL 015 318-041
SAE	-	1AL 015 318-051